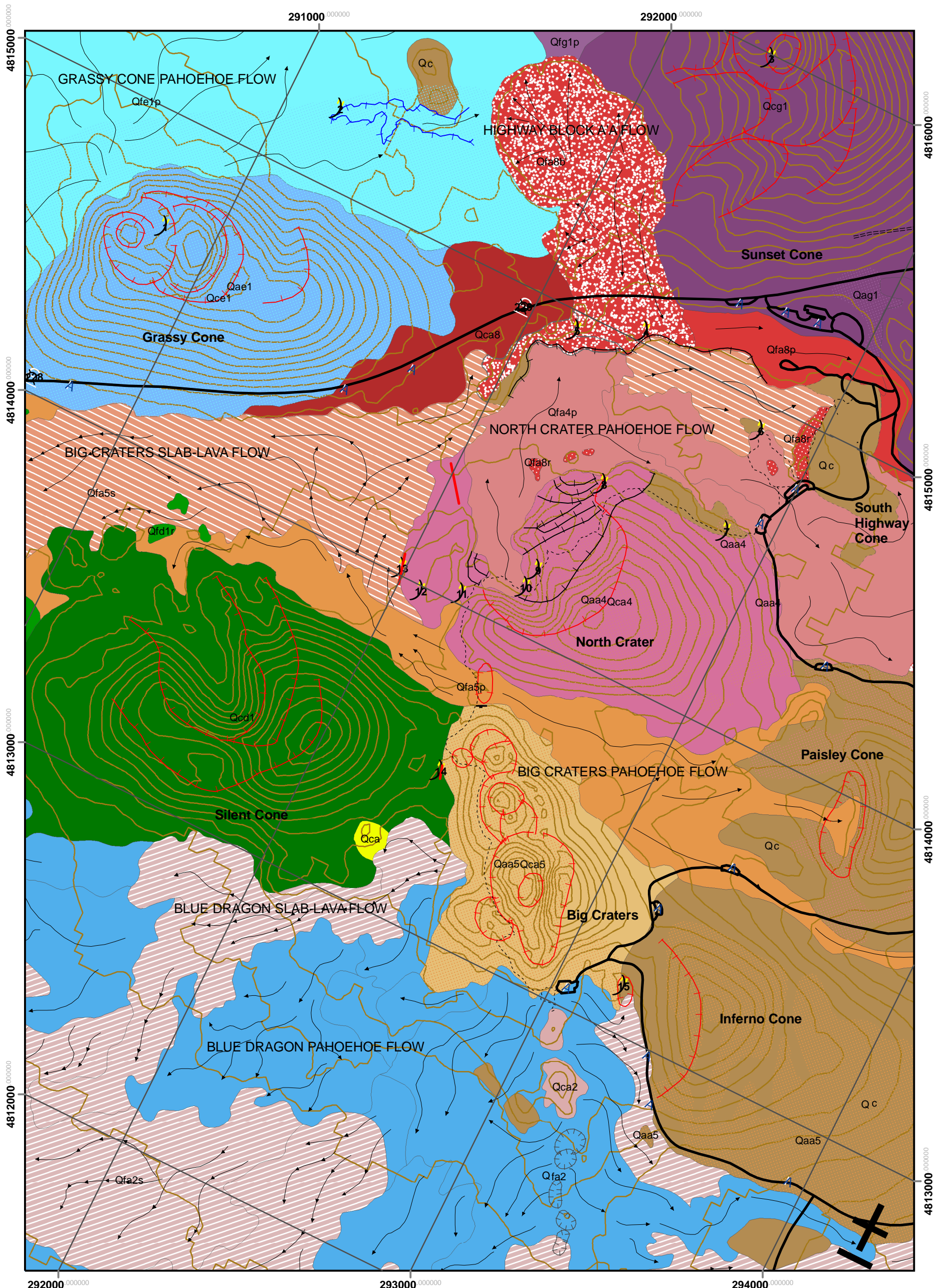


# Geologic Map of the Visitor Center Area Craters of the Moon National Monument and Preserve

Tiffany A. Rivera, Shaina M. Keane, and Douglass E. Owen



Source: ESRI Data & Maps Geologic Quadrangle 1632  
Projected Using North American Datum 1983  
1000 m Universal Transverse Mercator grid, zone 12  
Created in ArcGIS 9 using ArcMap for  
Craters of the Moon National Monument  
and Preserve, 2007

